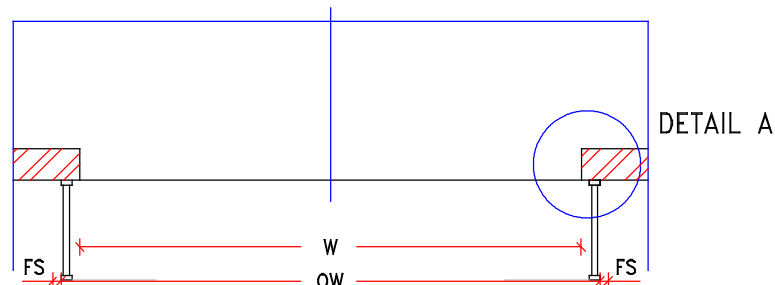
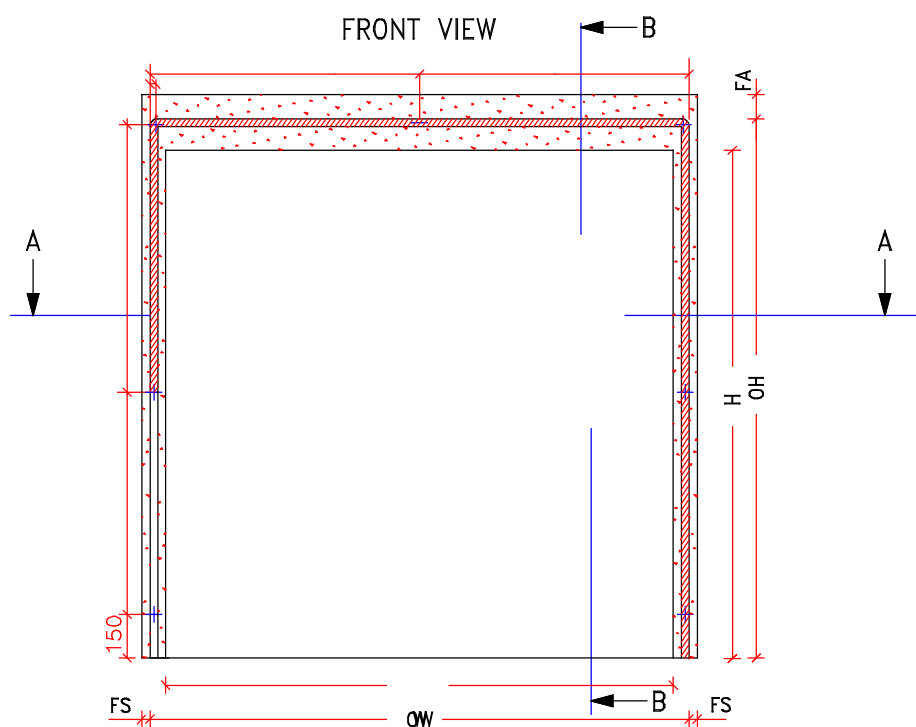


SECTION A-A

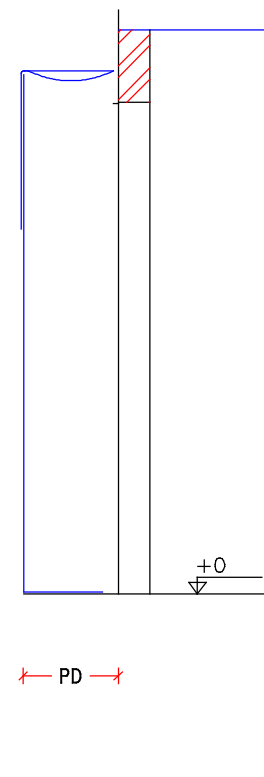


DETAIL A

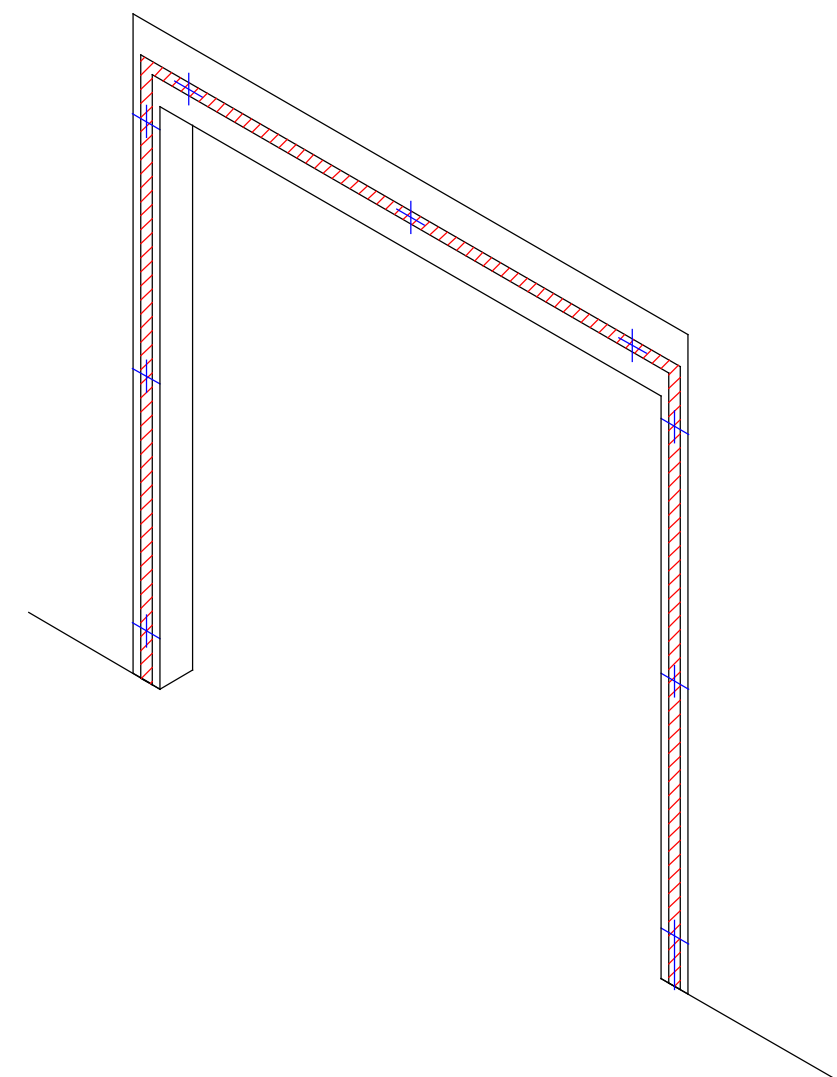
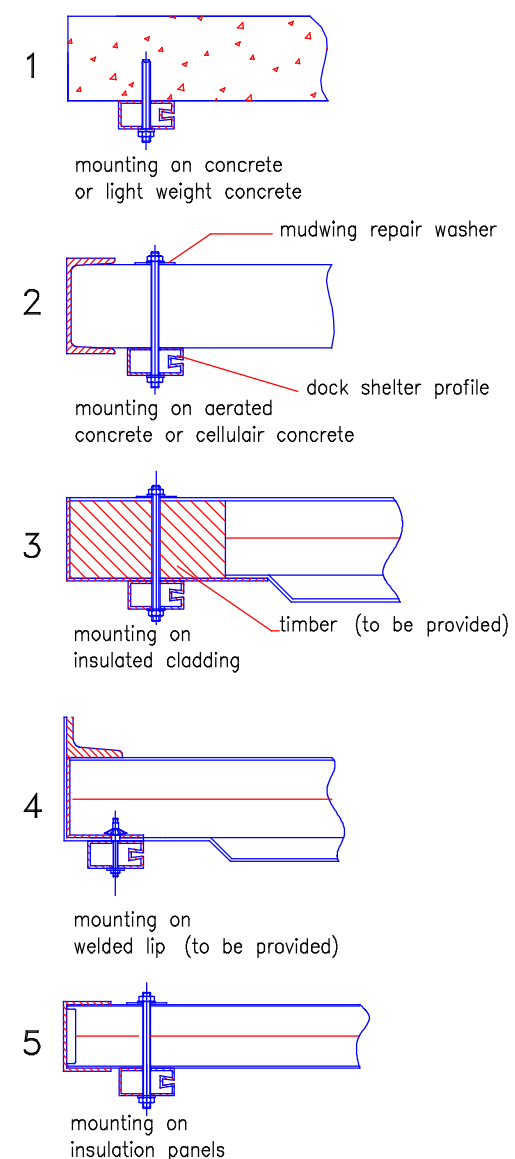
FRONT VIEW



SECTION B-B



DETAIL A



- NOTE:**
- The mounting surfaces for the dock shelter must be levelled and in line.
  - In case of a cantilever roof the free room above the shelter must be at least 150 mm and if the projection depth is 900 mm it must be 360 mm.

YOUR DIMENSIONS :		OW	OH	PD	W	H	MH	PH	OL	FS	FA
ITEM :	TYPE :										
ITEM :	TYPE :										
ITEM :	TYPE :										
Wall structure : (1-5 )		<input type="checkbox"/> otherwise :									



UNITS in mm

A	=	275	Opt 590 & OH >=3400 A=190mm
OW	=	Overall width	
OH	=	Tallest truck plus 500mm minimal	
PD	=	Projection depth	
W	=	Door width	
H	=	Door height	
FS	=	Free side room	= min.50
FA	=	Free room above	= min.150

WORK TO BE CARRIED OUT BY CUSTOMER,  
UNLESS IN ADVANCE OTHERWISE IS AGREED IN WRITING.

**Constructional :**

- Supply necessary mounting surface and free room as shown.
- Supply a steel counter frame on the inside in case of a single steel cladding.

 NECESSARY MOUNTING SURFACE  
 NECESSARY FREE SIDE ROOM

**LOADING  
SYSTEMS**

Opdrachtgever	:	Offertenr.	:	INSTALLATION DRAWING DOCK SHELTER	
Project	:	Opdrachtnr.	:		
Architect	:	Afgifte datum	:		
Uw ref. nr.	:				
Schaal:	Tolerantie: -0/+10	Doc.nr.: 403M.012IAE	Rev.: 22-04-2011	NR.: 403M.012 IA	